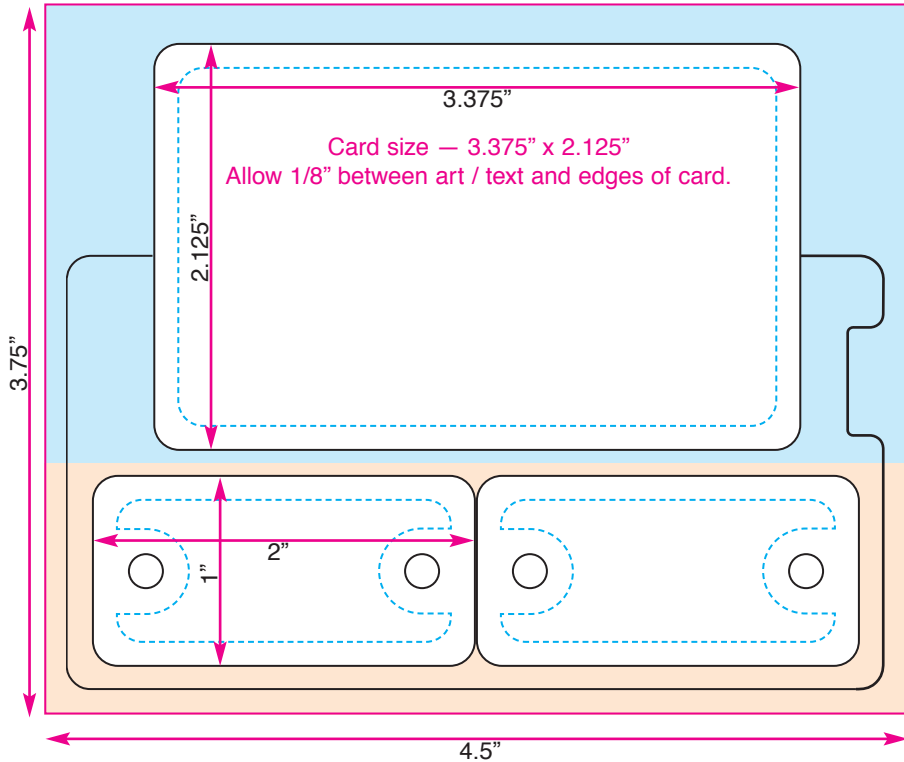


# STONEHOUSE

MARKETING SERVICES

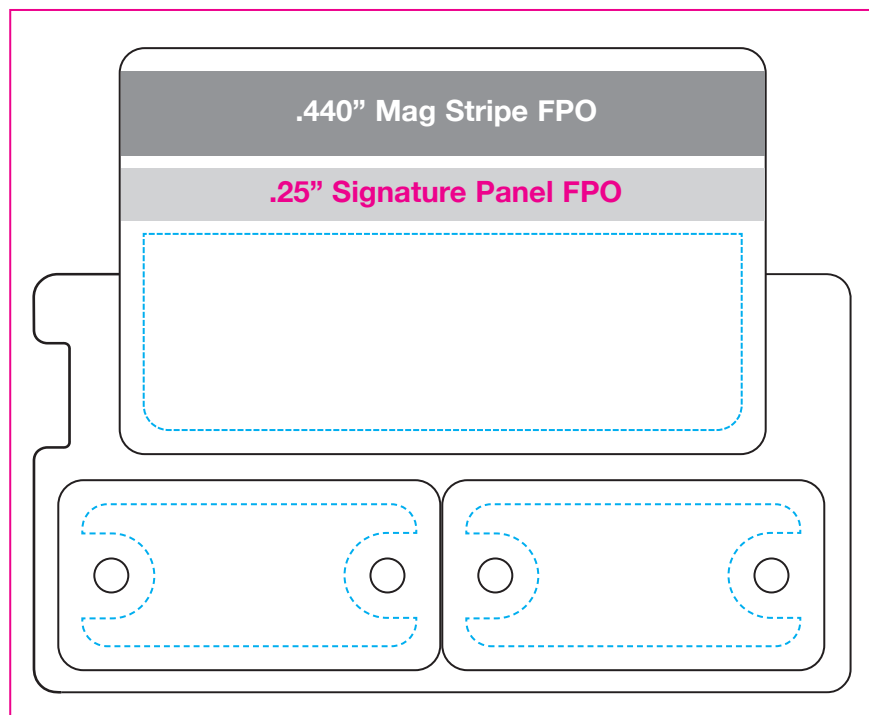
2039 Industrial Blvd. • Norman, OK 73069  
 405 360-5674 • Fax 405 360-6019  
 stonehousemarketing.com



Bleed for card if separate from keytag art

Bleed for keytags if separate from card art

**FRONT — StoneHouse Standard Common 1 card, 2 keytag**  
**Common Keytag 2" x 1"** — Allow 1/8" bleed from all inside keytag edges and keyhole 3/16" (.1875" keyhole .1875" from edge of keytag — left or right side).  
 Overall Bleed should fill entire matrix (4.5" x 3.75")  
 Finished matrix size: 3-3/8" x 4-1/4"



--- Copy / Art Limit  
 — Die Lines for Matrix

Please remove all die/matrix/bleed lines before flattening or rasterizing art work.

## BACK

If your order does not require a signature panel or mag stripe, you may begin your text/art 1/8" (.125") from the die line (top of card).